



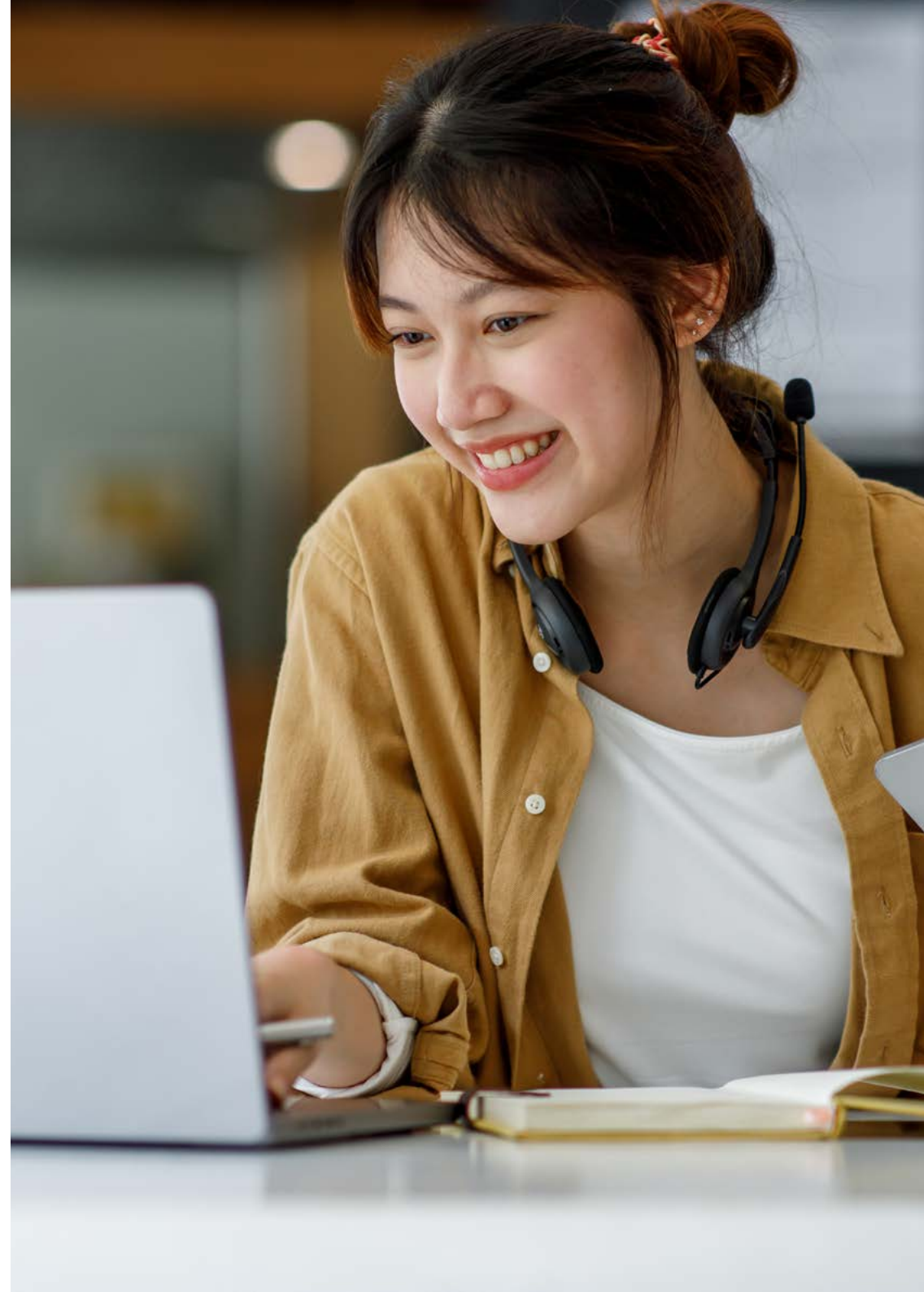
CFAB / ACA (ICAEW)

Live Online Timetable and
Overview Planner 2025
Daytime



Version 6.0 Information last updated 16th January 2025

Please note: Information and dates in this timetable are subject to change.



ACA Course Information (Current ACA Syllabus)

This timetable details the courses that our centre is offering for the ACA exams.

| Certificate Level | |
|-------------------|-------------------------------|
| AC | Accounting |
| AS | Assurance |
| BTF | Business Technology & Finance |
| PTX | Principles of Taxation |
| MI | Management Information |
| LAW | Law |
| EPA | End Point Assessment (1) |

Learners starting ACA Certificate from September 2024 will study the new ACA syllabus. Please refer to the 'Next Generation ACA Certificate Level Timetable' for more details.

Professional & Advanced Level courses on current syllabus will continue to run throughout 2025.

| Professional Level | |
|--------------------|---|
| FAR | Financial Accounting and Reporting IFRS (2) |
| AA | Audit & Assurance |
| TC | Tax Compliance |
| FM | Financial Management |
| BST | Business Strategy & Technology |
| BPT | Business Planning: Taxation (3) |
| BPB | Business Planning: Banking (3) |
| BPI | Business Planning: Insurance (3) |

| Advanced Level | |
|----------------|-------------------------------|
| CR | Corporate Reporting |
| SBM | Strategic Business Management |
| ACS | Advanced Case Study (4) |

- (1) The EPA is a requirement of the Level 4 Apprenticeship and applies to apprentice learners only - more details on this can be viewed [here](#).
 (2) FAR can only be taken under IFRS. All Kaplan FAR learners will receive complimentary access to our UK GAAP conversion course.
 (3) Business Planning can be sat under either the Taxation, Banking or Insurance variant. Only a learner with a workplace specialisation of Banking or Insurance should undertake the BPB or BPI exams - more details on this can be found [here](#). (4) A learner may not attempt the Case Study until they have attempted all other exams. A learner can sit all three Advanced Level assessments at the same session and still comply with this rule. A learner may not attempt the Case Study until they have completed all but their last year of approved training by the end of the month in which the assessment is held.



Please contact us using the details below to make a course booking on the timetable dates
 0161 259 7400 studentservices@kaplan.co.uk www.kaplan.co.uk/courses/aca-icaew

Kaplan Pathway Options (Current ACA Syllabus)

| Pathway | Certificate Level | Professional Sitting 1 | Professional Sitting 2 | Professional Sitting 3 | Advanced Sitting 1 | Advanced Sitting 2 |
|---|---------------------------|------------------------|------------------------|------------------------|--------------------|--------------------|
| 3:3 Professional & Intense Advanced | First 4–6 months of study | FAR/AA/TC | FM/BST/BP | – | CR/SBM/ACS | – |
| 3:3 Professional & Decoupled Advanced | First 4–6 months of study | FAR/AA/TC | FM/BST/BP | – | CR/SBM | ACS |
| 2:2:2 Professional & Intense Advanced | First 4–6 months of study | FAR/AA | TC/FM | BST/BP | CR/SBM/ACS | – |
| 2:2:2 Professional & Decoupled Advanced | First 4–6 months of study | FAR/AA | TC/FM | BST/BP | CR/SBM | ACS |

If your preferred pathway is not available at your chosen Kaplan training location we will be able to provide your preferred pathway via our [Live Online ACA course offering](#).

Our Advanced Case Study Resit Courses are designed to allow learners to understand where their exam technique went wrong and show them how to improve it. To find out more about our Advanced Case Study Resit Courses please click [here](#).

Learners studying Certificate Level must sit their exam in the same calendar year as their course of study. If the exam is sat in a different calendar year, updated study materials will be required.

Please ensure you study BPT **at the same time or after** TC as there is assumed knowledge from TC included within the BPT syllabus.



Please contact us using the details below to make a course booking on the timetable dates
 0161 259 7400 studentservices@kaplan.co.uk www.kaplan.co.uk/courses/aca-icaew

Kaplan's ACA Course Durations 2025 (Current ACA Syllabus)

| Certificate Days | | | |
|------------------|-----------|----------|-------|
| Subject | Tutor-Led | OnDemand | Total |
| AC | 7 | | 7 |
| AS | 3 | | 3 |
| LAW | | 3 | 3 |
| BTF | | 3 | 3 |
| PTX | 4 | | 4 |
| MI | 4 | | 4 |

Learners starting ACA Certificate from September 2024 will study the new ACA syllabus. Please refer to the 'Next Generation ACA Certificate Level Timetable' for more details.

| Live Online Course Times | |
|--------------------------|-------------------------|
| Daytime | 09.00 – 16.30 (UK Time) |

First time learners must study and attend the Tuition and Exam Preparation phases of the course. Individual phases of the course cannot be booked in isolation.

| Professional Days | | | | |
|-------------------|-----------|--------------|-----------|-------|
| Subject | Tuition | | Exam Prep | Total |
| | Tutor-Led | Personalised | Tutor-Led | |
| FAR | 6 | 2 | 4 | 12 |
| AA | 3 | 1 | 3 | 7 |
| TC | 6 | 2 | 3 | 11 |
| FM | 5 | 1 | 3 | 9 |
| BST | 3 | 1 | 3 | 7 |
| BPT | 5 | 3 | 4 | 12 |
| BPB | 5 | 3 | 4 | 12 |
| BPI | 5 | 3 | 4 | 12 |

| Advanced Days | | | | |
|---------------|-----------|--------------|-----------|-------|
| Subject | Tuition | | Exam Prep | Total |
| | Tutor-Led | Personalised | Tutor-Led | |
| CR | 5 | 2 | 4 | 11 |
| SBM | 3 | 1 | 3 | 7 |
| ACS | 5 | 0 | 5 | 10 |

Please note that for evening and Live Online courses, one session equates to half a day.



Please contact us using the details below to make a course booking on the timetable dates
0161 259 7400 studentservices@kaplan.co.uk www.kaplan.co.uk/courses/aca-icaew

Kaplan's ACA Next Generation Certificate Course Durations 2025

| Subject | Tutor-Led | Focus Day** | OnDemand | Total |
|--|-----------|-------------|----------|-------|
| Accounting Fundamentals (AF) | 7 | 1 | | 8 |
| Assurance and Risk Fundamentals (ARF) | 3 | 1 | | 4 |
| Tax Fundamentals (TF)* | 5 | 1 | | 6 |
| Business Law (BL)*** | | | 4 | 4 |
| Business Insight and Performance (BIP) | 5 | 1 | | 6 |
| Sustainability and Ethics (SE)*** | | | 4 | 4 |

* Please note: The Tax Fundamentals (TF) exam will not be available until 1st December 2025. Learners who wish to study Tax Fundamentals between September and December 2025 should instead complete the Principles of Tax (PTX) exam. PTX follows the current syllabus and can be taken as an alternative to TF.

** A Focus Day is a scheduled day within the course for consolidating knowledge and reinforcing learning, with content and pace tailored to individual learners.

*** It is recommended to study the four tutor-led Certificate papers from September to December. The remaining two papers, Business Law (BL) and Sustainability and Ethics (SE), should be studied OnDemand during January and February. Learners who prefer a more intensive study schedule may choose to study one or both of Business Law and Sustainability and Ethics alongside Taxation Fundamentals (TF) and Business Insight and Performance (BIP).

| Live Online Course Times | |
|--------------------------|-----------------------|
| Daytime | 09.00–16.30 (UK Time) |



Please contact us using the details below to make a course booking on the timetable dates
 0161 259 7400 studentservices@kaplan.co.uk www.kaplan.co.uk/courses/aca-icaew

Live Online Certificate Level Current Syllabus 2025

| Week commencing: | January | | | | | | | February | | | | | | | March | | | | | | | April | | | | | | | May | | | | | | | | | | | | | | | |
|---------------------------------------|---------|---|---|------|----|----|----|----------|----|----|------|---|---|---|-------|----|----|----|------|----|----|-------|----|----|----|-----|----|----|-----|------|----|----|----|----|----|---|---|---|----|----|----|----|----|----|
| | 6th | | | 13th | | | | 3rd | | | 10th | | | | 24th | | | | 10th | | | 24th | | | | 7th | | | | 19th | | | | | | | | | | | | | | |
| | 6 | 7 | 8 | 9 | 10 | 13 | 14 | 15 | 16 | 17 | 3 | 4 | 5 | 6 | 7 | 10 | 11 | 12 | 13 | 14 | 24 | 25 | 26 | 27 | 28 | 10 | 11 | 12 | 13 | 14 | 24 | 25 | 26 | 27 | 28 | 7 | 8 | 9 | 10 | 11 | 19 | 20 | 21 | 22 |
| M | T | W | T | F | M | T | W | T | F | M | T | W | T | F | M | T | W | T | F | M | T | W | T | F | M | T | W | T | F | M | T | W | T | F | M | T | W | T | F | M | T | W | T | F |
| Accounting (AC) - Option 1 | T | T | T | T | T | T | T | | | | | | | | | | | | | | | | | | | | | | | | | | | | | | | | | | | | | |
| Assurance (AS) - Option 1 | | | | | | | T | T | T | | | | | | | | | | | | | | | | | | | | | | | | | | | | | | | | | | | |
| Accounting (AC) - Option 2 | | | | | | | | | | T | T | T | T | T | T | T | | | | | | | | | | | | | | | | | | | | | | | | | | | | |
| Assurance (AS) - Option 2 | | | | | | | | | | | | | | | | T | T | T | | | | | | | | | | | | | | | | | | | | | | | | | | |
| Principles of Tax (PTX) | | | | | | | | | | | | | | | | | | | | | | T | T | T | T | | | | | | | | | | | | | | | | | | | |
| Management Information (MI) | | | | | | | | | | | | | | | | | | | | | | | | | | | | | | | | | | | | | | | | | | | | |
| End Point Assessment (EPA) - March ** | | | T | T | T | | | | | | | | | | | | | | | | | EP | EP | | | | | | | | | | | | | | | | | | | | | |
| End Point Assessment (EPA) - June ** | | | | | | | | | | | | | | | | | | | | | | | | | | | | | | | | | | | | | | | | | | | | |

Live Online Certificate Level Next Generation Syllabus 2025

| Week commencing: | September | | | | | | | | | | | | | | October | | | | | | | | | | November | | | | | | | December | | | | | | | | | | | | | | | | | | | | | | |
|---|-----------|---|---|-----|---|---|---|------|----|----|----|------|----|----|---------|----|----|-----|----|----|----|------|---|---|----------|---|---|------|---|----|----|----------|----|----|------|----|----|----|----|----|----|----|----|----|----|---|---|----|----|----|----|----|----|----|
| | 1st | | | 8th | | | | 15th | | | | 22nd | | | 29th | | | 6th | | | | 20th | | | 10th | | | 17th | | | | 8th | | | 15th | | | | | | | | | | | | | | | | | | | |
| | 1 | 2 | 3 | 4 | 5 | 8 | 9 | 10 | 11 | 12 | 15 | 16 | 17 | 18 | 19 | 22 | 23 | 24 | 25 | 26 | 29 | 30 | 1 | 2 | 3 | 6 | 7 | 8 | 9 | 10 | 20 | 21 | 22 | 23 | 24 | 10 | 11 | 12 | 13 | 14 | 17 | 18 | 19 | 20 | 21 | 8 | 9 | 10 | 11 | 12 | 15 | 16 | 17 | 18 |
| M | T | W | T | F | M | T | W | T | F | M | T | W | T | F | M | T | W | T | F | M | T | W | T | F | M | T | W | T | F | M | T | W | T | F | M | T | W | T | F | M | T | W | T | F | M | T | W | T | F | M | T | W | T | F |
| Accounting Fundamentals (AF) - Option 1 | T | T | T | | F | T | T | T | T | | | | | | | | | | | | | | | | | | | | | | | | | | | | | | | | | | | | | | | | | | | | | |
| Assurance & Risk Fundamentals (ARF) - Option 1 | | | | T | T | | | | | F | T | | | | | | | | | | | | | | | | | | | | | | | | | | | | | | | | | | | | | | | | | | | |
| Accounting Fundamentals (AF) - Option 2 | | | | | | T | T | T | | F | T | T | T | | T | | | | | | | | | | | | | | | | | | | | | | | | | | | | | | | | | | | | | | | |
| Assurance & Risk Fundamentals (ARF) - Option 2 | | | | | | T | T | | | | | | F | T | | | | | | | | | | | | | | | | | | | | | | | | | | | | | | | | | | | | | | | | |
| Accounting Fundamentals (AF) - Option 3 | | | | | | | | | | T | T | T | | | | F | T | T | T | | | | | | | | | | | | | | | | | | | | | | | | | | | | | | | | | | | |
| Assurance & Risk Fundamentals (ARF) - Option 3 | | | | | | | | | | | | | T | T | | | | | | | F | T | | | | | | | | | | | | | | | | | | | | | | | | | | | | | | | | |
| Principles of Tax (PTX) | | | | | | | | | | | | | | | | | | | | | | | | | | | | | | | | | | | | | | | | | | | | | | | | | | | | | | |
| Business Insight & Performance (BIP) - Option 1 | | | | | | | | | | | | | | | | | | | | | | | | | | | | | | | | | | | | | | | | | | | | | | | | | | | | | | |
| Business Insight & Performance (BIP) - Option 2 | | | | | | | | | | | | | | | | | | | | | | | | | | | | | | | | | | | | | | | | | | | | | | | | | | | | | | |
| End Point Assessment (EPA) - December ** | | | | | | | | | | | | | | | | | | | | | | | | | | | | | | | | | | | | | | | | | | | | | | | | | | | | | | |

T Tuition F Focus Day * EP Exam Preparation

* A Focus Day is a scheduled day within the course for consolidating knowledge and reinforcing learning, with content and pace tailored to individual learners. There will not be a live session on these dates. It is essential that you work through the content of the Focus Day before the next classroom course date detailed on the timetable.

** For apprentices only.

Please note: The Tax Fundamentals (TF) exam will not be available until 1st December 2025. Learners who wish to study Tax Fundamentals between September and December 2025 should instead complete the Principles of Tax (PTX) exam. PTX follows the current syllabus and can be taken as an alternative to TF.

ACA Certificate exams are computer-based. **We recommend sitting your exam 2 weeks after the course finishes.** To book your exam please contact Kaplan Student Services or your employer (in cases where exams are booked centrally).

There are three study methods available: Classroom, Live Online (dates shown above) or OnDemand

The above timetable indicates that learners will attend four Certificate papers from September to December. It is recommended that the remaining two papers, Business Law (BL) and Sustainability and Ethics (SE), be studied OnDemand during January and February. Learners who wish to study more intensively could choose to study one or both of BL and SE alongside Principles of Tax (PTX) and Business Insight and Performance (BIP).

Live Online Professional Level - June 2025

| Week commencing: | March | | | | | | | April | | | | | | | May | | | | | | | | |
|------------------------------|-------|------|------|-----|------|------|------|-------|------|------|------|-----|------|------|------|------|---|---|---|---|---|---|---|
| | 17th | 24th | 31st | 7th | 14th | 21st | 28th | 5th | 12th | 19th | 26th | 3rd | 10th | 17th | 24th | 31st | | | | | | | |
| Available Study Combinations | 17 | 18 | 19 | 20 | 21 | 22 | 23 | 24 | 25 | 26 | 27 | 28 | 29 | 30 | 1 | 2 | 3 | 4 | 5 | 6 | 7 | 8 | 9 |
| 3.3 FAR/AA/TC - Option 1 | T | T | T | T | T | T | T | T | T | T | T | T | T | T | T | T | T | T | T | T | T | T | T |
| 3.3 FAR/AA/TC - Option 2 | T | T | T | T | T | T | T | T | T | T | T | T | T | T | T | T | T | T | T | T | T | T | T |
| 3.3 FAR/AA/TC - Option 3 | T | T | T | T | T | T | T | T | T | T | T | T | T | T | T | T | T | T | T | T | T | T | T |
| 3.3 BP7/BST/FM - Option 1 | T | T | T | T | T | T | T | T | T | T | T | T | T | T | T | T | T | T | T | T | T | T | T |
| 3.3 BP7/BST/FM - Option 2 | T | T | T | T | T | T | T | T | T | T | T | T | T | T | T | T | T | T | T | T | T | T | T |
| 3.3 BP7/BST/FM - Option 3 | T | T | T | T | T | T | T | T | T | T | T | T | T | T | T | T | T | T | T | T | T | T | T |
| 2.2.2 FAR/AA - Option 1 | T | T | T | T | T | T | T | T | T | T | T | T | T | T | T | T | T | T | T | T | T | T | T |
| 2.2.2 FAR/AA - Option 2 | T | T | T | T | T | T | T | T | T | T | T | T | T | T | T | T | T | T | T | T | T | T | T |
| 2.2.2 FAR/AA - Option 3 | T | T | T | T | T | T | T | T | T | T | T | T | T | T | T | T | T | T | T | T | T | T | T |
| 2.2.2 BP7/BST - Option 1 | T | T | T | T | T | T | T | T | T | T | T | T | T | T | T | T | T | T | T | T | T | T | T |
| 2.2.2 BP7/BST - Option 2 | T | T | T | T | T | T | T | T | T | T | T | T | T | T | T | T | T | T | T | T | T | T | T |
| 2.2.2 BP7/BST - Option 3 | T | T | T | T | T | T | T | T | T | T | T | T | T | T | T | T | T | T | T | T | T | T | T |
| 2.2.2 FM/TC - Option 1 | T | T | T | T | T | T | T | T | T | T | T | T | T | T | T | T | T | T | T | T | T | T | T |
| 2.2.2 FM/TC - Option 2 | T | T | T | T | T | T | T | T | T | T | T | T | T | T | T | T | T | T | T | T | T | T | T |
| 2.2.2 FM/TC - Option 3 | T | T | T | T | T | T | T | T | T | T | T | T | T | T | T | T | T | T | T | T | T | T | T |
| BPB | T | T | T | T | T | T | T | T | T | T | T | T | T | T | T | T | T | T | T | T | T | T | T |
| BPI | T | T | T | T | T | T | T | T | T | T | T | T | T | T | T | T | T | T | T | T | T | T | T |

For information, please find the classroom and exam dates within the available study combinations of the individual subjects below:

| | | | | | | | | | | | | | | | | | | | | | | | | |
|---|---|---|---|---|---|---|---|---|---|---|---|---|---|---|---|---|---|---|---|---|---|---|---|---|
| Financial Accounting & Reporting (FAR) - Option 1 | T | T | T | T | T | T | T | T | T | T | T | T | T | T | T | T | T | T | T | T | T | T | T | T |
| Audit & Assurance (AA) - Option 1 | T | T | T | T | T | T | T | T | T | T | T | T | T | T | T | T | T | T | T | T | T | T | T | T |
| Tax Compliance (TC) - Option 1 | T | T | T | T | T | T | T | T | T | T | T | T | T | T | T | T | T | T | T | T | T | T | T | T |
| Financial Accounting & Reporting (FAR) - Option 2 | T | T | T | T | T | T | T | T | T | T | T | T | T | T | T | T | T | T | T | T | T | T | T | T |
| Audit & Assurance (AA) - Option 2 | T | T | T | T | T | T | T | T | T | T | T | T | T | T | T | T | T | T | T | T | T | T | T | T |
| Tax Compliance (TC) - Option 2 | T | T | T | T | T | T | T | T | T | T | T | T | T | T | T | T | T | T | T | T | T | T | T | T |
| Financial Accounting & Reporting (FAR) - Option 3 | T | T | T | T | T | T | T | T | T | T | T | T | T | T | T | T | T | T | T | T | T | T | T | T |
| Audit & Assurance (AA) - Option 3 | T | T | T | T | T | T | T | T | T | T | T | T | T | T | T | T | T | T | T | T | T | T | T | T |
| Tax Compliance (TC) - Option 3 | T | T | T | T | T | T | T | T | T | T | T | T | T | T | T | T | T | T | T | T | T | T | T | T |
| Business Planning Tax (BPT) - Option 1 | T | T | T | T | T | T | T | T | T | T | T | T | T | T | T | T | T | T | T | T | T | T | T | T |
| Business Strategy & Technology (BST) - Option 1 | T | T | T | T | T | T | T | T | T | T | T | T | T | T | T | T | T | T | T | T | T | T | T | T |
| Financial Management (FM) - Option 1 | T | T | T | T | T | T | T | T | T | T | T | T | T | T | T | T | T | T | T | T | T | T | T | T |
| Business Planning Tax (BPT) - Option 2 | T | T | T | T | T | T | T | T | T | T | T | T | T | T | T | T | T | T | T | T | T | T | T | T |
| Business Strategy & Technology (BST) - Option 2 | T | T | T | T | T | T | T | T | T | T | T | T | T | T | T | T | T | T | T | T | T | T | T | T |
| Financial Management (FM) - Option 2 | T | T | T | T | T | T | T | T | T | T | T | T | T | T | T | T | T | T | T | T | T | T | T | T |
| Business Planning Tax (BPT) - Option 3 | T | T | T | T | T | T | T | T | T | T | T | T | T | T | T | T | T | T | T | T | T | T | T | T |
| Business Strategy & Technology (BST) - Option 3 | T | T | T | T | T | T | T | T | T | T | T | T | T | T | T | T | T | T | T | T | T | T | T | T |
| Financial Management (FM) - Option 3 | T | T | T | T | T | T | T | T | T | T | T | T | T | T | T | T | T | T | T | T | T | T | T | T |
| Business Planning Banking (BPB) | T | T | T | T | T | T | T | T | T | T | T | T | T | T | T | T | T | T | T | T | T | T | T | T |
| Business Planning Insurance (BPI) | T | T | T | T | T | T | T | T | T | T | T | T | T | T | T | T | T | T | T | T | T | T | T | T |

| Week commencing: | May | | | | | | | June | | | | | | | | | | | | | | | | | |
|------------------------------|------|------|-----|-----|------|------|------|------|------|------|------|-----|------|------|------|---|---|---|---|---|---|----|----|----|----|
| | 19th | 26th | 2nd | 9th | 16th | 23rd | 30th | 6th | 13th | 20th | 27th | 3rd | 10th | 17th | 24th | | | | | | | | | | |
| Available Study Combinations | 19 | 20 | 21 | 22 | 23 | 24 | 25 | 26 | 27 | 28 | 29 | 30 | 1 | 2 | 3 | 4 | 5 | 6 | 7 | 8 | 9 | 10 | 11 | 12 | 13 |
| 3.3 FAR/AA/TC - Option 1 | T | T | T | T | T | T | T | T | T | T | T | T | T | T | T | T | T | T | T | T | T | T | T | T | T |
| 3.3 FAR/AA/TC - Option 2 | T | T | T | T | T | T | T | T | T | T | T | T | T | T | T | T | T | T | T | T | T | T | T | T | T |
| 3.3 FAR/AA/TC - Option 3 | T | T | T | T | T | T | T | T | T | T | T | T | T | T | T | T | T | T | T | T | T | T | T | T | T |
| 3.3 BP7/BST/FM - Option 1 | T | T | T | T | T | T | T | T | T | T | T | T | T | T | T | T | T | T | T | T | T | T | T | T | T |
| 3.3 BP7/BST/FM - Option 2 | T | T | T | T | T | T | T | T | T | T | T | T | T | T | T | T | T | T | T | T | T | T | T | T | T |
| 3.3 BP7/BST/FM - Option 3 | T | T | T | T | T | T | T | T | T | T | T | T | T | T | T | T | T | T | T | T | T | T | T | T | T |
| 2.2.2 FAR/AA - Option 1 | T | T | T | T | T | T | T | T | T | T | T | T | T | T | T | T | T | T | T | T | T | T | T | T | T |
| 2.2.2 FAR/AA - Option 2 | T | T | T | T | T | T | T | T | T | T | T | T | T | T | T | T | T | T | T | T | T | T | T | T | T |
| 2.2.2 FAR/AA - Option 3 | T | T | T | T | T | T | T | T | T | T | T | T | T | T | T | T | T | T | T | T | T | T | T | T | T |
| 2.2.2 BP7/BST - Option 1 | T | T | T | T | T | T | T | T | T | T | T | T | T | T | T | T | T | T | T | T | T | T | T | T | T |
| 2.2.2 BP7/BST - Option 2 | T | T | T | T | T | T | T | T | T | T | T | T | T | T | T | T | T | T | T | T | T | T | T | T | T |
| 2.2.2 BP7/BST - Option 3 | T | T | T | T | T | T | T | T | T | T | T | T | T | T | T | T | T | T | T | T | T | T | T | T | T |
| 2.2.2 FM/TC - Option 1 | T | T | T | T | T | T | T | T | T | T | T | T | T | T | T | T | T | T | T | T | T | T | T | T | T |
| 2.2.2 FM/TC - Option 2 | T | T | T | T | T | T | T | T | T | T | T | T | T | T | T | T | T | T | T | T | T | T | T | T | T |
| 2.2.2 FM/TC - Option 3 | T | T | T | T | T | T | T | T | T | T | T | T | T | T | T | T | T | T | T | T | T | T | T | T | T |
| BPB | T | T | T | T | T | T | T | T | T | T | T | T | T | T | T | T | T | T | T | T | T | T | T | T | T |
| BPI | T | T | T | T | T | T | T | T | T | T | T | T | T | T | T | T | T | T | T | T | T | T | T | T | T |

For information, please find the classroom and exam dates within the available study combinations of the individual subjects below:

| | | | | | | | | | | | | | | | | | | | | | | | | | |
|---|---|---|---|---|---|---|---|---|---|---|---|---|---|---|---|---|---|---|---|---|---|---|---|---|---|
| Financial Accounting & Reporting (FAR) - Option 1 | T | T | T | T | T | T | T | T | T | T | T | T | T | T | T | T | T | T | T | T | T | T | T | T | T |
| Audit & Assurance (AA) - Option 1 | T | T | T | T | T | T | T | T | T | T | T | T | T | T | T | T | T | T | T | T | T | T | T | T | T |
| Tax Compliance (TC) - Option 1 | T | T | T | T | T | T | T | T | T | T | T | T | T | T | T | T | T | T | T | T | T | T | T | T | T |
| Financial Accounting & Reporting (FAR) - Option 2 | T | T | T | T | T | T | T | T | T | T | T | T | T | T | T | T | T | T | T | T | T | T | T | T | T |
| Audit & Assurance (AA) - Option 2 | T | T | T | T | T | T | T | T | T | T | T | T | T | T | T | T | T | T | T | T | T | T | T | T | T |
| Tax Compliance (TC) - Option 2 | T | T | T | T | T | T | T | T | T | T | T | T | T | T | T | T | T | T | T | T | T | T | T | T | T |
| Financial Accounting & Reporting (FAR) - Option 3 | T | T | T | T | T | T | T | T | T | T | T | T | T | T | T | T | T | T | T | T | T | T | T | T | T |
| Audit & Assurance (AA) - Option 3 | T | T | T | T | T | T | T | T | T | T | T | T | T | T | T | T | T | T | T | T | T | T | T | T | T |
| Tax Compliance (TC) - Option 3 | T | T | T | T | T | T | T | T | T | T | T | T | T | T | T | T | T | T | T | T | T | T | T | T | T |
| Business Planning Tax (BPT) - Option 1 | T | T | T | T | T | T | T | T | T | T | T | T | T | T | T | T | T | T | T | T | T | T | T | T | T |
| Business Strategy & Technology (BST) - Option 1 | T | T | T | T | T | T | T | T | T | T | T | T | T | T | T | T | T | T | T | T | T | T | T | T | T |
| Financial Management (FM) - Option 1 | T | T | T | T | T | T | T | T | T | T | T | T | T | T | T | T | T | T | T | T | T | T | T | T | T |
| Business Planning Tax (BPT) - Option 2 | T | T | T | T | T | T | T | T | T | T | T | T | T | T | T | T | T | T | T | T | T | T | T | T | T |
| Business Strategy & Technology (BST) - Option 2 | T | T | T | T | T | T | T | T | T | T | T | T | T | T | T | T | T | T | T | T | T | T | T | T | T |
| Financial Management (FM) - Option 2 | T | T | T | T | T | T | T | T | T | T | T | T | T | T | T | T | T | T | T | T | T | T | T | T | T |
| Business Planning Tax (BPT) - Option 3 | T | T | T | T | T | T | T | T | T | T | T | T | T | T | T | T | T | T | T | T | T | T | T | T | T |
| Business Strategy & Technology (BST) - Option 3 | T | T | T | T | T | T | T | T | T | T | T | T | T | T | T | T | T | T | T | T | T | T | T | T | T |
| Financial Management (FM) - Option 3 | T | T | T | T | T | T | T | T | T | T | T | T | T | T | T | T | T | T | T | T | T | T | T | T | T |
| Business Planning Banking (BPB) | T | T | T | T | T | T | T | T | T | T | T | T | T | T | T | T | T | T | T | T | T | T | T | T | T |
| Business Planning Insurance (BPI) | T | T | T | T | T | T | T | T | T | T | T | T | T | T | T | T | T | T | T | T | T | T | T | T | T |

T Tuition
 T Personalised **
 T Live Online/Exam **

EP Exam Preparation
 E Real Exam

* Personalised days are studied flexibly online and there will not be a live session on these dates. The timetable dates provided for personalised days are indicative only. You ultimately have the flexibility to complete your personalised study in the period between the preceding and next classroom course dates as shown on the timetable.

** This day consists of an online teaching session in the morning, followed by a course exam in the afternoon.

There are three study methods available: Classroom (dates shown above), Live Online or OnDemand.

Live Online Advanced Level - July 2025

| Week commencing: | March | | | | | | | April | | | | | | | May | | | | | | | | | | | | | | | | | | | | | |
|------------------------------|-------|------|------|------|------|------|-----|-------|-----|-----|-----|-----|-----|------|------|------|------|------|------|------|------|------|------|-----|-----|------|------|------|------|------|------|------|------|------|------|---|
| | 24th | 25th | 26th | 27th | 28th | 31st | 1st | 2nd | 3rd | 4th | 7th | 8th | 9th | 10th | 11th | 21st | 22nd | 23rd | 24th | 25th | 28th | 29th | 30th | 1st | 2nd | 12th | 13th | 14th | 15th | 16th | 19th | 20th | 21st | 22nd | 23rd | |
| Available Study Combinations | M | T | W | T | F | M | T | W | T | F | M | T | W | T | F | M | T | W | T | F | M | T | W | T | F | M | T | W | T | F | M | T | W | T | F | |
| CR/SBM/ACS - Option 1 | | | T | T | T | T | T | T | T | T | T | T | T | T | | | | | | | T | T | T | T | T | T | | | | | | | | | | |
| CR/SBM/ACS - Option 2 | | | T | T | T | T | T | T | T | T | T | T | T | T | | | | | | | T | T | T | T | T | T | | | | | | | | | | |
| CR/SBM/ACS - Option 3 | | | | | | T | T | T | T | T | T | T | T | T | | | | | | | | | | | | | T | T | T | T | T | T | T | T | T | T |
| CR/SBM/ACS - Option 4 | | | | | | T | T | T | T | T | T | T | T | T | | | | | | | | | | | | | T | T | T | T | T | T | T | T | T | T |
| CR/SBM - Option 1 | | | | | | T | T | T | T | T | T | T | T | T | | | | | | | T | T | T | T | T | | | | | | | | | | | |
| CR/SBM - Option 2 | | | | | | T | T | T | T | T | T | T | T | T | | | | | | | T | T | T | T | T | | | | | | | | | | | |
| CR/SBM - Option 3 | | | | | | T | T | T | T | T | T | T | T | T | | | | | | | | | | | | | T | T | T | T | T | T | T | T | T | T |
| CR/SBM - Option 4 | | | | | | | | | | T | T | T | T | T | | | | | | | | | | | | | T | T | T | T | T | T | T | T | T | T |
| CR/SBM - Option 5 | | | | | | | | | | T | T | T | T | T | | | | | | | | | | | | | T | T | T | T | T | T | T | T | T | T |
| ACS - Option 1 | | | T | T | T | | | | | | | | | | | | | | | | | | | | | T | T | T | T | T | T | T | T | T | T | T |
| ACS - Option 2 | | | T | T | T | | | | | | | | | | | | | | | | | | | | | T | T | T | T | T | T | T | T | T | T | T |
| ACS - Option 3 | | | | | | T | T | T | | | | | | | | | | | | | | | | | | | T | T | T | T | T | T | T | T | T | T |
| ACS - Option 4 | | | | | | T | T | T | | | | | | | | | | | | | | | | | | | T | T | T | T | T | T | T | T | T | T |

For information, please find the classroom and exam dates within the available study combinations of the individual subjects below:

| | | | | | | | | | | | | | | | | | | | | | | | | | | | | | | | | | | | | |
|--|--|--|--|--|--|---|---|---|---|---|--|--|--|--|--|--|--|--|--|--|--|--|--|--|--|--|--|--|--|--|--|--|--|--|--|--|
| Corporate Reporting (CR) - Option 1 | | | | | | T | T | T | T | T | | | | | | | | | | | | | | | | | | | | | | | | | | |
| Strategic Business Management (SBM) - Option 1 | | | | | | T | T | T | T | T | | | | | | | | | | | | | | | | | | | | | | | | | | |
| Advanced Case Study (ACS) - Option 1 | | | | | | T | T | T | T | T | | | | | | | | | | | | | | | | | | | | | | | | | | |
| Corporate Reporting (CR) - Option 2 | | | | | | T | T | T | T | T | | | | | | | | | | | | | | | | | | | | | | | | | | |
| Strategic Business Management (SBM) - Option 2 | | | | | | T | T | T | T | T | | | | | | | | | | | | | | | | | | | | | | | | | | |
| Advanced Case Study (ACS) - Option 2 | | | | | | T | T | T | T | T | | | | | | | | | | | | | | | | | | | | | | | | | | |
| Corporate Reporting (CR) - Option 3 | | | | | | T | T | T | T | T | | | | | | | | | | | | | | | | | | | | | | | | | | |
| Strategic Business Management (SBM) - Option 3 | | | | | | T | T | T | T | T | | | | | | | | | | | | | | | | | | | | | | | | | | |
| Advanced Case Study (ACS) - Option 3 | | | | | | T | T | T | T | T | | | | | | | | | | | | | | | | | | | | | | | | | | |
| Corporate Reporting (CR) - Option 4 | | | | | | T | T | T | T | T | | | | | | | | | | | | | | | | | | | | | | | | | | |
| Strategic Business Management (SBM) - Option 4 | | | | | | T | T | T | T | T | | | | | | | | | | | | | | | | | | | | | | | | | | |
| Advanced Case Study (ACS) - Option 4 | | | | | | T | T | T | T | T | | | | | | | | | | | | | | | | | | | | | | | | | | |
| Corporate Reporting (CR) - Option 5 | | | | | | T | T | T | T | T | | | | | | | | | | | | | | | | | | | | | | | | | | |
| Strategic Business Management (SBM) - Option 5 | | | | | | T | T | T | T | T | | | | | | | | | | | | | | | | | | | | | | | | | | |

| Week commencing: | Jun | July | | | | | | | | | | | | | | | | | | | | |
|------------------------------|------|------|-----|-----|-----|-----|-----|------|------|------|------|------|------|------|------|------|------|------|------|----|--|--|
| | 30th | 1st | 2nd | 4th | 7th | 8th | 9th | 10th | 11th | 14th | 15th | 16th | 17th | 18th | 21st | 22nd | 23rd | 24th | 25th | | | |
| Available Study Combinations | M | T | W | T | F | M | T | W | T | F | M | T | W | T | F | M | T | W | T | F | | |
| CR/SBM/ACS - Option 1 | | | | | EP | EP | EP | EP | EP | EP | EP | EP | EP | EP | EP | EP | EP | EP | EP | EP | | |
| CR/SBM/ACS - Option 2 | | | | | EP | EP | EP | EP | EP | EP | EP | EP | EP | EP | EP | EP | EP | EP | EP | EP | | |
| CR/SBM/ACS - Option 3 | | | | | EP | EP | EP | EP | EP | EP | EP | EP | EP | EP | EP | EP | EP | EP | EP | EP | | |
| CR/SBM/ACS - Option 4 | | | | | EP | EP | EP | EP | EP | EP | EP | EP | EP | EP | EP | EP | EP | EP | EP | EP | | |
| CR/SBM - Option 1 | | | | | EP | EP | EP | EP | EP | EP | EP | EP | EP | EP | EP | EP | EP | EP | EP | EP | | |
| CR/SBM - Option 2 | | | | | EP | EP | EP | EP | EP | EP | EP | EP | EP | EP | EP | EP | EP | EP | EP | EP | | |
| CR/SBM - Option 3 | | | | | EP | EP | EP | EP | EP | EP | EP | EP | EP | EP | EP | EP | EP | EP | EP | EP | | |
| CR/SBM - Option 4 | | | | | EP | EP | EP | EP | EP | EP | EP | EP | EP | EP | EP | EP | EP | EP | EP | EP | | |
| CR/SBM - Option 5 | | | | | EP | EP | EP | EP | EP | EP | EP | EP | EP | EP | EP | EP | EP | EP | EP | EP | | |
| ACS - Option 1 | | | | | EP | EP | EP | EP | EP | EP | EP | EP | EP | EP | EP | EP | EP | EP | EP | EP | | |
| ACS - Option 2 | | | | | EP | EP | EP | EP | EP | EP | EP | EP | EP | EP | EP | EP | EP | EP | EP | EP | | |
| ACS - Option 3 | | | | | EP | EP | EP | EP | EP | EP | EP | EP | EP | EP | EP | EP | EP | EP | EP | EP | | |
| ACS - Option 4 | | | | | EP | EP | EP | EP | EP | EP | EP | EP | EP | EP | EP | EP | EP | EP | EP | EP | | |

T Tuition
 T - Personalised **
 T Live Online/Exam **
 EP Exam Preparation
 E Real Exam

For information, please find the classroom and exam dates within the available study combinations of the individual subjects below:

| | | | | | | | | | | | | | | | | | | | | |
|--|--|--|--|--|----|----|----|----|----|----|----|----|----|----|----|----|----|----|----|----|
| Corporate Reporting (CR) - Option 1 | | | | | EP | EP | EP | EP | EP | EP | EP | EP | EP | EP | EP | EP | EP | EP | EP | EP |
| Strategic Business Management (SBM) - Option 1 | | | | | EP | EP | EP | EP | EP | EP | EP | EP | EP | EP | EP | EP | EP | EP | EP | EP |
| Advanced Case Study (ACS) - Option 1 | | | | | EP | EP | EP | EP | EP | EP | EP | EP | EP | EP | EP | EP | EP | EP | EP | EP |
| Corporate Reporting (CR) - Option 2 | | | | | EP | EP | EP | EP | EP | EP | EP | EP | EP | EP | EP | EP | EP | EP | EP | EP |
| Strategic Business Management (SBM) - Option 2 | | | | | EP | EP | EP | EP | EP | EP | EP | EP | EP | EP | EP | EP | EP | EP | EP | EP |
| Advanced Case Study (ACS) - Option 2 | | | | | EP | EP | EP | EP | EP | EP | EP | EP | EP | EP | EP | EP | EP | EP | EP | EP |
| Corporate Reporting (CR) - Option 3 | | | | | EP | EP | EP | EP | EP | EP | EP | EP | EP | EP | EP | EP | EP | EP | EP | EP |
| Strategic Business Management (SBM) - Option 3 | | | | | EP | EP | EP | EP | EP | EP | EP | EP | EP | EP | EP | EP | EP | EP | EP | EP |
| Advanced Case Study (ACS) - Option 3 | | | | | EP | EP | EP | EP | EP | EP | EP | EP | EP | EP | EP | EP | EP | EP | EP | EP |
| Corporate Reporting (CR) - Option 4 | | | | | EP | EP | EP | EP | EP | EP | EP | EP | EP | EP | EP | EP | EP | EP | EP | EP |
| Strategic Business Management (SBM) - Option 4 | | | | | EP | EP | EP | EP | EP | EP | EP | EP | EP | EP | EP | EP | EP | EP | EP | EP |
| Advanced Case Study (ACS) - Option 4 | | | | | EP | EP | EP | EP | EP | EP | EP | EP | EP | EP | EP | EP | EP | EP | EP | EP |
| Corporate Reporting (CR) - Option 5 | | | | | EP | EP | EP | EP | EP | EP | EP | EP | EP | EP | EP | EP | EP | EP | EP | EP |
| Strategic Business Management (SBM) - Option 5 | | | | | EP | EP | EP | EP | EP | EP | EP | EP | EP | EP | EP | EP | EP | EP | EP | EP |

* Personalised days are studied flexibly online and there will not be a live session on these dates. The timetable dates provided for personalised days are indicative only. You ultimately have the flexibility to complete your personalised study in the period between the preceding and next classroom course dates as shown on the timetable.

** This day consists of an online teaching session in the morning, followed by a course exam in the afternoon.

There are three study methods available: Classroom (dates shown above), Live Online or OnDemand.

A complimentary Data & IT module available on MyKaplan will enhance your Professional & Advanced Level Studies.

