



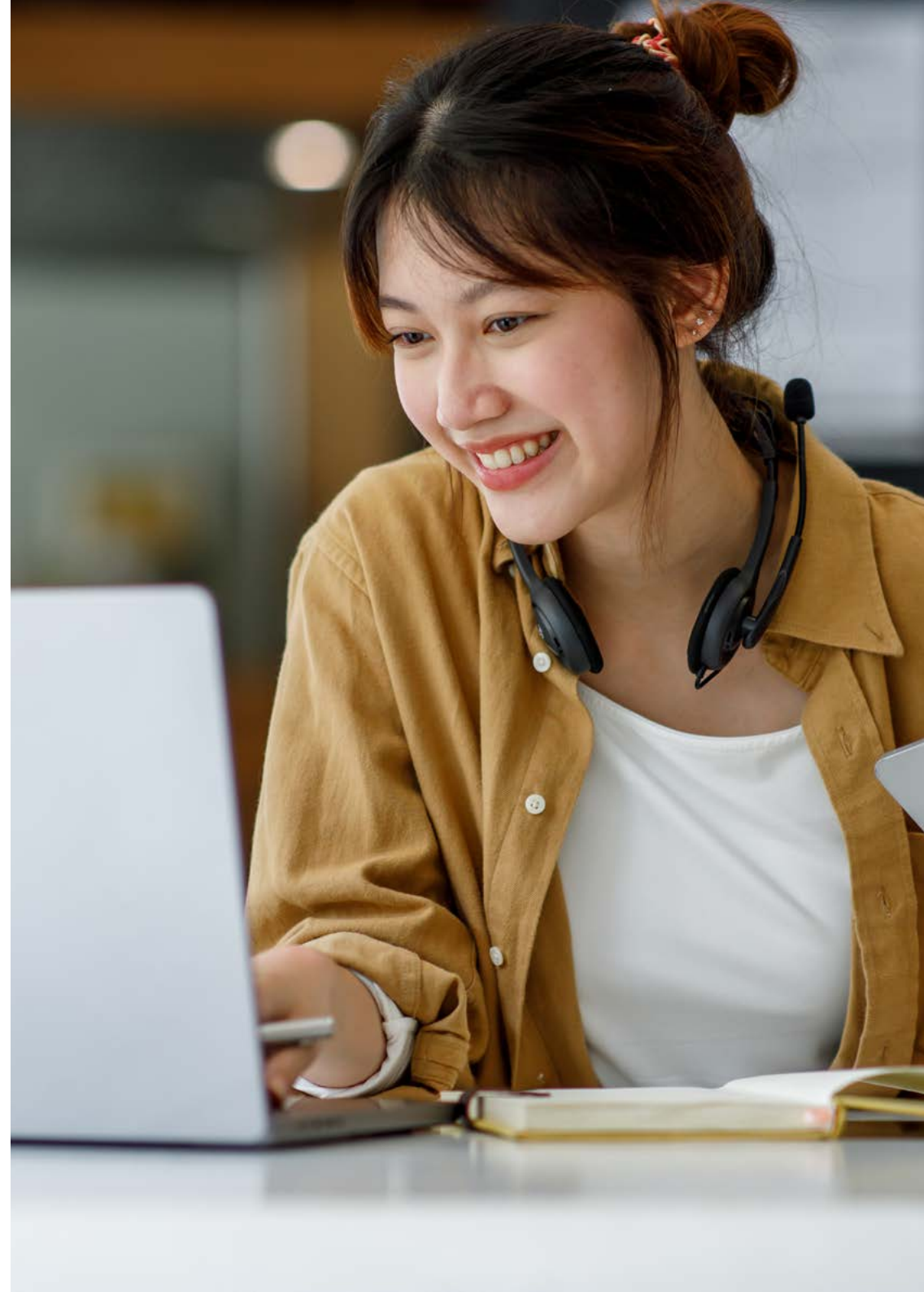
# CFAB / ACA (ICAEW)

Live Online Timetable and  
Overview Planner 2025  
**Evening**



Version 6.0 Information last updated 22nd January 2025

Please note: Information and dates in this timetable are subject to change.



# ACA Course Information (Current ACA Syllabus)

This timetable details the courses that our centre is offering for the ACA exams.

Professional Level	
FAR	Financial Accounting and Reporting IFRS (2)
AA	Audit & Assurance
TC	Tax Compliance
FM	Financial Management
BST	Business Strategy & Technology
BPT	Business Planning: Taxation (3)
BPB	Business Planning: Banking (3)
BPI	Business Planning: Insurance (3)

Advanced Level	
CR	Corporate Reporting
SBM	Strategic Business Management
ACS	Advanced Case Study (4)

For Certificate courses, see Classroom or Live Online Daytime timetable.

- (1) The EPA is a requirement of the Level 4 Apprenticeship and applies to apprentice learners only - more details on this can be viewed [here](#).  
(2) FAR can only be taken under IFRS. All Kaplan FAR learners will receive complimentary access to our UK GAAP conversion course.  
(3) Business Planning can be sat under either the Taxation, Banking or Insurance variant. Only a learner with a workplace specialisation of Banking or Insurance should undertake the BPB or BPI exams - more details on this can be found [here](#). (4) A learner may not attempt the Case Study until they have attempted all other exams. A learner can sit all three Advanced Level assessments at the same session and still comply with this rule. A learner may not attempt the Case Study until they have completed all but their last year of approved training by the end of the month in which the assessment is held.



Please contact us using the details below to make a course booking on the timetable dates  
0161 259 7400 [studentservices@kaplan.co.uk](mailto:studentservices@kaplan.co.uk) [www.kaplan.co.uk/courses/aca-icaew](http://www.kaplan.co.uk/courses/aca-icaew)

# Kaplan Pathway Options (Current ACA Syllabus)

Pathway	Certificate Level	Professional Sitting 1	Professional Sitting 2	Professional Sitting 3	Advanced Sitting 1	Advanced Sitting 2
3:3 Professional & Intense Advanced	First 4–6 months of study	FAR/AA/TC	FM/BST/BP	–	CR/SBM/ACS	–
3:3 Professional & Decoupled Advanced	First 4–6 months of study	FAR/AA/TC	FM/BST/BP	–	CR/SBM	ACS
2:2:2 Professional & Intense Advanced	First 4–6 months of study	FAR/AA	TC/FM	BST/BP	CR/SBM/ACS	–
2:2:2 Professional & Decoupled Advanced	First 4–6 months of study	FAR/AA	TC/FM	BST/BP	CR/SBM	ACS

If your preferred pathway is not available at your chosen Kaplan training location we will be able to provide your preferred pathway via our [Live Online ACA course offering](#).

Our Advanced Case Study Resit Courses are designed to allow learners to understand where their exam technique went wrong and show them how to improve it. To find out more about our Advanced Case Study Resit Courses please click [here](#).

Learners studying Certificate Level must sit their exam in the same calendar year as their course of study. If the exam is sat in a different calendar year, updated study materials will be required.

Please ensure you study BPT **at the same time or after** TC as there is assumed knowledge from TC included within the BPT syllabus.



Please contact us using the details below to make a course booking on the timetable dates  
 0161 259 7400 [studentservices@kaplan.co.uk](mailto:studentservices@kaplan.co.uk) [www.kaplan.co.uk/courses/aca-icaew](http://www.kaplan.co.uk/courses/aca-icaew)

# Kaplan's ACA Course Durations 2025 (Current ACA Syllabus)

Professional Days				
Subject	Tuition		Exam Prep	Total
	Tutor-Led	Personalised	Tutor-Led	
FAR	12	4	8	24
AA	6	2	6	14
TC	12	4	6	22
FM	10	2	6	18
BST	6	2	6	14
BPT	10	6	8	24
BPB	10	6	8	24
BPI	10	6	8	24

Advanced Days				
Subject	Tuition		Exam Prep	Total
	Tutor-Led	Personalised	Tutor-Led	
CR	10	4	8	22
SBM	6	2	6	14
ACS	10	0	10	20

Live Online Course Times	
Evening	18.00–20.30 (UK Time)

For Certificate courses, see Classroom or Live Online Daytime timetable.

First time learners must study and attend the Tuition and Exam Preparation phases of the course. Individual phases of the course cannot be booked in isolation.

**Please note** that for evening and Live Online courses, one session equates to half a day.



Please contact us using the details below to make a course booking on the timetable dates  
 0161 259 7400 [studentservices@kaplan.co.uk](mailto:studentservices@kaplan.co.uk) [www.kaplan.co.uk/courses/aca-icaew](http://www.kaplan.co.uk/courses/aca-icaew)







## Live Online Evenings Advanced Level - November 2025

Week commencing:	July					August										September										October																																		
	28th					4th					11th					18th					1st					8th					15th					22nd					29th																			
	28	29	30	31	1	4	5	6	7	8	11	12	13	14	15	18	19	20	21	22	1	2	3	4	5	8	9	10	11	12	15	16	17	18	19	22	23	24	25	26	29	30	1	2	3															
<b>Available Study Combinations</b>	M	T	W	T	F	M	T	W	T	F	M	T	W	T	F	M	T	W	T	F	M	T	W	T	F	M	T	W	T	F	M	T	W	T	F	M	T	W	T	F	M	T	W	T	F	M	T	W	T	F	M	T	W	T	F	M	T	W	T	F
Corporate Reporting (CR)		T		T			T		T			T		T			T		T																																									
Strategic Business Management (SBM)			T					T					T					T						T					T																															
Case Study (CS) - Resit Course																																																												

Week commencing:	October															November																													
	6th					13th					20th					27th					3rd																								
	6	7	8	9	10	13	14	15	16	17	20	21	22	23	24	27	28	29	30	31	3	4	5	6	7																				
<b>Available Study Combinations</b>	M	T	W	T	F	M	T	W	T	F	M	T	W	T	F	M	T	W	T	F	M	T	W	T	F	M	T	W	T	F															
Corporate Reporting (CR)		EP		EP			EP		EP			EP		PT			EP		EP																										
Strategic Business Management (SBM)						EP		EP			EP		PT			EP		EP																											
Case Study (CS) - Resit Course																																													

<b>T</b>	Tuition	<b>EP</b>	Exam Preparation
<b>T</b>	T - Personalised *	<b>E</b>	Real Exam
<b>PT</b>	Progress Test Submission Deadline **		

\* Personalised days are studied flexibly online and there will not be a live session on these dates. The timetable dates provided for personalised days are indicative but you must complete your personalised study in the period between the preceding and next classroom course dates as shown on the timetable.

There are three study methods available: Classroom, Live Online (dates shown above) or OnDemand

A complimentary Data & IT module available on MyKaplan will enhance your Professional & Advanced Level Studies.