



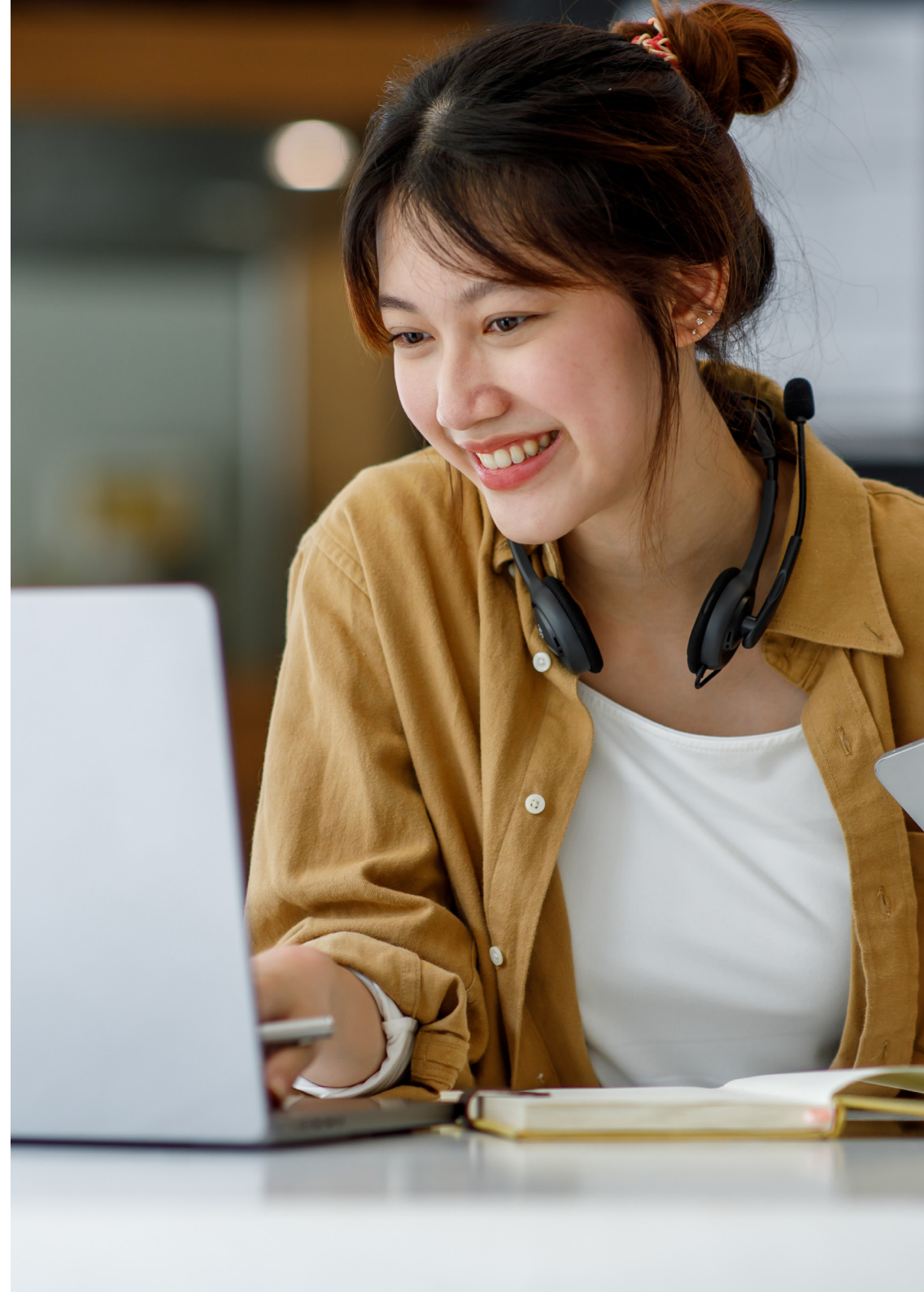
ACA (ICAEW)

Live Online Timetable and
Overview Planner 2026
Evening



Version 6.0 Information last updated 3 June 2026

Please note: Information and dates in this timetable are subject to change.



ACA Course Information

This timetable details the Live Online evening courses that Kaplan offers for ACA exams.

Next Generation ACA

Professional Level	
FCS	Fundamental Case Study
ARR	Assurance, Risk & Reporting
TCP	Taxation Compliance & Planning
CRDA	Corporate Reporting, Data & Assurance
BDS	Business & Digital Strategy
CFS	Corporate Financial Strategy

Current ACA Syllabus

Advanced Level	
CR	Corporate Reporting
SBM	Strategic Business Management
ACS	Advanced Case Study (1)

Next Generation ACA Advanced Level exams will not be available until 2027.

For Certificate courses, see Classroom or Live Online Daytime timetable.

For comprehensive details on transitional rules, timelines, and guidance please refer to the [ICAEW website](#).

(1) A learner may not attempt the Case Study until they have attempted all other exams. A learner can sit all three Advanced Level assessments at the same session and still comply with this rule. A learner may not attempt the Case Study until they have completed all but their last year of approved training by the end of the month in which the assessment is held.



Please contact us using the details below to make a course booking on the timetable dates
0161 259 7400 studentservices@kaplan.co.uk www.kaplan.co.uk/courses/aca-icaew

Kaplan's Recommended ACA Next Generation Pathway

Certificate Level (Months 1-6)	Professional Level (Months 7-23)			Advanced Level (Months 24-28)
	Professional sitting 1	Professional sitting 2	Professional sitting 3	
All	Fundamental Case Study (FCS)	Tax Compliance & Planning (TCP)	Business & Digital Strategy (BDS)	Technical Case Study (TCS)
	Assurance, Risk & Reporting (ARR)	Corporate Reporting, Data & Assurance (CRDA)	Corporate Financial Strategy (CFS)	Strategic Case Study (SCS)

Next Generation ACA Advanced Level exams will not be available until 2027.

For detailed transitional rules, timelines and guidance please see the [ICAEW webpage](#).



Please contact us using the details below to make a course booking on the timetable dates
0161 259 7400 studentservices@kaplan.co.uk www.kaplan.co.uk/courses/aca-icaew

Kaplan's ACA Course Durations

Classroom Course Times: Evening 18.00–20.30 (UK Time)

Professional Level Next Generation ACA					
Subject	Tuition		Exam Prep		Total
	Tutor-Led*	Focus Session**	Tutor-Led*	Focus Session**	
Fundamental Case Study (FCS)	4	-	4	2	10
Assurance, Risk & Reporting (ARR)	10	2	8	2	22
Taxation Compliance & Planning (TCP)	16	2	8	2	28
Corporate Reporting, Data & Assurance (CRDA)	10	2	8	2	22
Business & Digital Strategy (BDS)	6	2	6	2	16
Corporate Financial Strategy (CFS)	10	2	6	2	20

For Certificate courses, see Classroom or Live Online Daytime timetable.

Please note that for evening and Live Online courses, one session equates to half a day.

Our Advanced Case Study Resit Courses are designed to allow learners to understand where their exam technique went wrong and show them how to improve it. To find out more about our Advanced Case Study Resit Courses please click [here](#).

*The stated course duration includes time allocated for completion of a progress test during the tuition phase, and a mock exam(s) during the exam preparation phase.

Advanced				
Subject	Tuition		Exam Prep	Total
	Tutor-Led*	Personalised	Tutor-Led*	
Corporate Reporting (CR)	10	4	8	22
Strategic Business Management (SBM)	6	2	6	14
Advanced Case Study (ACS)	10	0	10	20

**Focus Sessions are scheduled within the course to consolidate knowledge and reinforce learning. The content and pace are tailored to individual learners.



Please contact us using the details below to make a course booking on the timetable dates
0161 259 7400 studentservices@kaplan.co.uk www.kaplan.co.uk/courses/aca-icaew

Live Online Professional Level - December 2026 - Evenings

Week commencing:	July					August										September										October																																		
	27th					3rd					10th					17th					24th					7th					21st					28th					5th																			
	27	28	29	30	31	3	4	5	6	7	10	11	12	13	14	17	18	19	20	21	24	25	26	27	28	7	8	9	10	11	21	22	23	24	25	28	29	30	1	2	5	6	7	8	9															
Subjects available:	M	T	W	T	F	M	T	W	T	F	M	T	W	T	F	M	T	W	T	F	M	T	W	T	F	M	T	W	T	F	M	T	W	T	F	M	T	W	T	F	M	T	W	T	F	M	T	W	T	F	M	T	W	T	F	M	T	W	T	F
Tax Compliance & Planning (TCP)		T		T			T	T			T	T					T	T				F		F			T		T			T		T			T		T			T		T			T		T			T		T						
Corporate Reporting, Data & Assurance (CRDA)						T			T				T	T		T			T			F		F									T			T		T				T		T			T		T			T		T						

Week commencing:	October										November										December																								
	19th					26th					2nd					9th					16th					23th					30th														
	19	20	21	22	23	26	27	28	29	30	2	3	4	5	6	9	10	11	12	13	16	17	18	19	20	23	24	25	26	27	30	1	2	3	4										
Subjects available:	M	T	W	T	F	M	T	W	T	F	M	T	W	T	F	M	T	W	T	F	M	T	W	T	F	M	T	W	T	F	M	T	W	T	F	M	T	W	T	F	M	T	W	T	F
Tax Compliance & Planning (TCP)		EP		EP							EP	EP					EP	PT				F		F			EP					EP					EP								
Corporate Reporting, Data & Assurance (CRDA)			EP			EP			EP		EP			EP		PT						F		F		EP					EP														

T	Tuition	EP	Exam Preparation
F	Focus Day *	E	Real Exam
		PT	Progress Test Submission Deadline **

* A Focus Day is a scheduled day within the course for consolidating knowledge and reinforcing learning, with content and pace tailored to individual learners. There will not be a live session on these dates. It is essential that you work through the content of the Focus Day before the next classroom course date detailed on the timetable.

** The progress test dates above are submission deadlines, there will be no live session on these dates. You must submit your script by 2pm (UK time) on these specified days.

There are three study methods available: Classroom, Live Online (dates shown above) or OnDemand.

Live Online Advanced Level - July 2026 - Evenings

Week commencing:	February					March					April					May																								
	9th					23th					2nd					13th					20th					27th					4th									
	9	10	11	12	13	23	24	25	26	27	2	3	4	5	6	13	14	15	16	17	20	21	22	23	24	27	28	29	30	1	4	5	6	7	8					
M	T	W	T	F	M	T	W	T	F	M	T	W	T	F	M	T	W	T	F	M	T	W	T	F	M	T	W	T	F	M	T	W	T	F						
Available Study Combinations	T		T			T		T			T		T			T					T					T														
ACS																																								
ACS - Resit Course																																								
For information, please find the classroom and exam dates within the available study combinations of the individual subjects below:																																								
Advanced Case Study (ACS)	T		T			T		T			T		T			T					T					T														
Advanced Case Study (ACS) - Resit Course																																								

Week commencing:	May					June					July																																												
	11th					18th					1st					22th					29th			6th			13th			20th																									
	11	12	13	14	15	18	19	20	21	22	1	2	3	4	5	22	23	24	25	26	29	30	1	2	3	6	7	8	9	10	13	14	15	16	17	20	21	22	23	24															
M	T	W	T	F	M	T	W	T	F	M	T	W	T	F	M	T	W	T	F	M	T	W	T	F	M	T	W	T	F	M	T	W	T	F	M	T	W	T	F	M	T	W	T	F											
Available Study Combinations											EP		EP			EP	EP				EP	EP						EP								EP																			
ACS																																																							
ACS - Resit Course			EP					EP																																															
For information, please find the classroom and exam dates within the available study combinations of the individual subjects below:																																																							
Advanced Case Study (ACS)											EP		EP			EP	EP				EP	EP						EP								EP																			
Advanced Case Study (ACS) - Resit Course			EP					EP																																															

T Tuition EP Exam Preparation
PT Progress Test Submission Deadline ** E Real Exam

* Personalised days are studied flexibly online and there will not be a live session on these dates. The timetable dates provided for personalised days are indicative only. You ultimately have the flexibility to complete your personalised study in the period between the preceding and next classroom course dates as shown on the timetable.

** The progress test dates above are submission deadlines, there will be no live session on these dates. You must submit your script by 2pm (UK time) on these specified days.

There are three study methods available: Classroom, Live Online (dates shown above) or OnDemand.

A complimentary Data & IT module is available on MyKaplan to recap Info and Excel functions used in CR & SBM.

Live Online Advanced Level - November 2026 - Evenings

Week commencing:	July					August										September																			
	27th					3rd					10th					17th					31st					7th					14th				
Subjects available:	27	28	29	30	31	3	4	5	6	7	10	11	12	13	14	17	18	19	20	21	31	1	2	3	4	7	8	9	10	11	14	15	16	17	18
	M	T	W	T	F	M	T	W	T	F	M	T	W	T	F	M	T	W	T	F	M	T	W	T	F	M	T	W	T	F	M	T	W	T	F
Corporate Reporting (CR)		T		T			T		T			T		T			T		T			T		T			T		T			T			
Strategic Business Management (SBM)			T					T					T					T					T					T							PT
Advanced Case Study (ACS) - Resit course																																			

Week commencing:	September					October														November															
	21st					28th				5th				12th				19th				26th				2nd									
Subjects available:	21	22	23	24	25	28	29	30	1	2	5	6	7	8	9	12	13	14	15	16	19	20	21	22	23	26	27	28	29	30	2	3	4	5	6
	M	T	W	T	F	M	T	W	T	F	M	T	W	T	F	M	T	W	T	F	M	T	W	T	F	M	T	W	T	F	M	T	W	T	F
Corporate Reporting (CR)		PT										EP		EP			EP		EP			EP		PT			EP		EP			E			
Strategic Business Management (SBM)																EP		EP			EP		PT			EP		EP				E			
Advanced Case Study (ACS) - Resit course		EP					EP																												E

T Tuition	EP Exam Preparation
T T - Personalised *	E Real Exam
	PT Progress Test Submission Deadline **

* Personalised days are studied flexibly online and there will not be a live session on these dates. The timetable dates provided for personalised days are indicative only. You ultimately have the flexibility to complete your personalised study in the period between the preceding and next classroom course dates as shown on the timetable.

** The progress test dates above are submission deadlines, there will be no live session on these dates. You must submit your script by 2pm (UK time) on these specified days.

There are three study methods available: Classroom, Live Online (dates shown above) or OnDemand.

A complimentary Data & IT module is available on MyKaplan to recap Info and Excel functions used in CR & SBM.