



# CFAB / ACA (ICAEW)

Liverpool Timetable 2020

**PLEASE NOTE:**

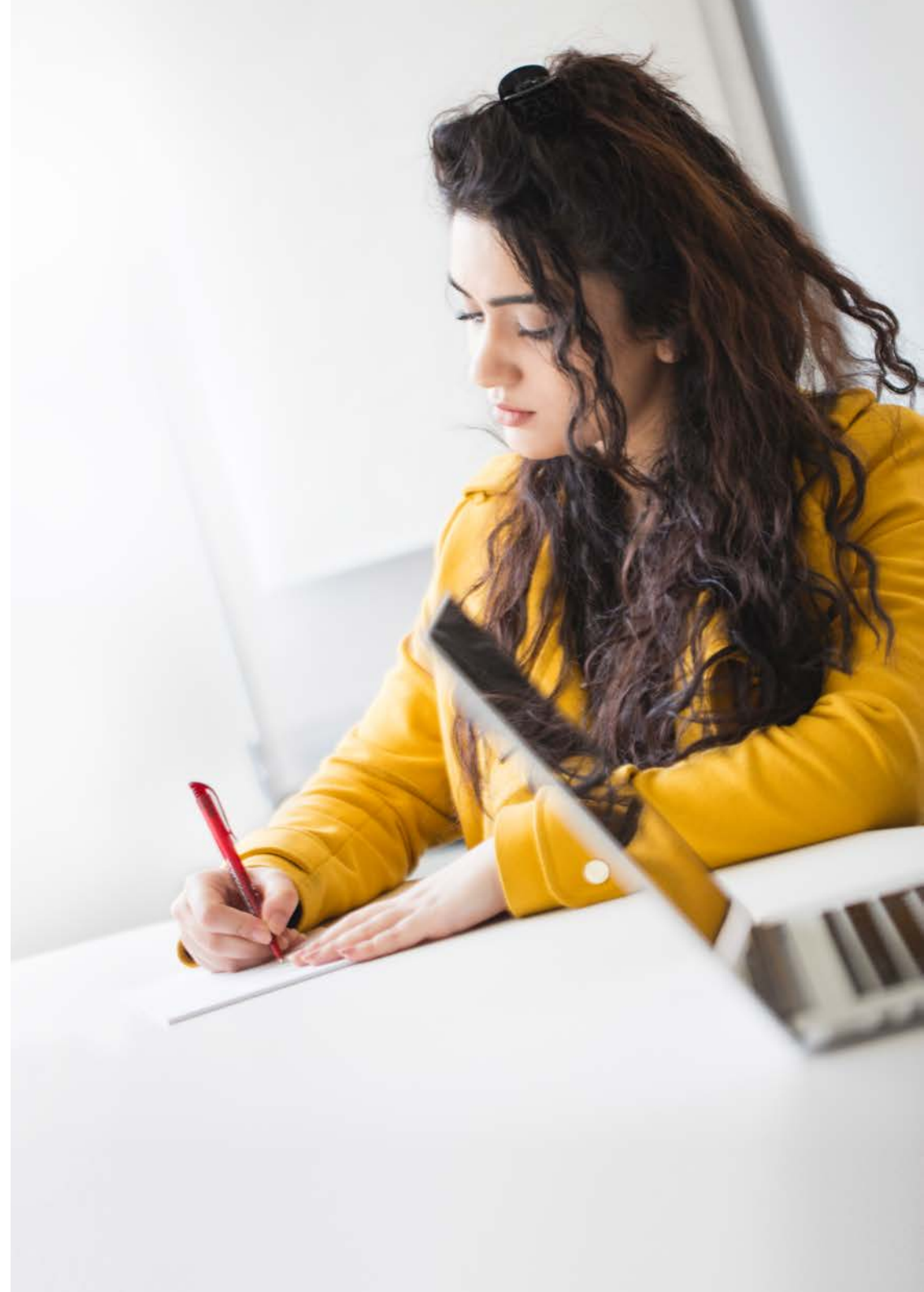
All course dates in 2020 will  
be run remotely using

**Live Online**



Information last updated 16 September 2020

Please note: Information and dates in this timetable are subject to change.



# ACA Course Information 2020

This timetable details the courses that our centre is offering for the ACA exams in 2020.

Certificate Level	
AC	Accounting
AS	Assurance
BTF	Business Technology & Finance
PTX	Principles of Taxation
MI	Management Information
LAW	Law
EPA	End Point Assessment (1)

Professional Level	
FAR	Financial Accounting and Reporting IFRS (2)
AA	Audit & Assurance
TC	Tax Compliance
FM	Financial Management
BST	Business Strategy & Technology
BPT	Business Planning: Taxation (3)
BPB	Business Planning: Banking (3)
BPI	Business Planning: Insurance (3)

Advanced Level	
CR	Corporate Reporting
SBM	Strategic Business Management
ACS	Advanced Case Study (4)

(1) The EPA is a requirement of the Level 4 Apprenticeship and applies to apprentice students only - more details on this can be viewed [here](#).

(2) FAR can only be taken under IFRS. All Kaplan FAR students will receive complimentary access to our UK GAAP conversion course.

(3) Business Planning can be sat under either the Taxation, Banking or Insurance variant. Only a student with a workplace specialisation of Banking or Insurance should undertake the BPB or BPI exams - more details on this can be found [here](#). (4) A student may not attempt the Case Study until they have attempted all other exams. A student can sit all three Advanced Level assessments at the same session and still comply with this rule. A student may not attempt the Case Study until they have completed all but their last year of approved training by the end of the month in which the assessment is held.



Please contact us using the details below to make a course booking on the timetable dates  
 0161 259 7400 [studentservices@kaplan.co.uk](mailto:studentservices@kaplan.co.uk) [www.kaplan.co.uk/courses/aca-icaew](http://www.kaplan.co.uk/courses/aca-icaew)

# Kaplan Pathway Options

Pathway	Certificate Level	Professional Sitting 1	Professional Sitting 2	Professional Sitting 3	Advanced Sitting 1	Advanced Sitting 2
3:3 Professional & Intense Advanced	First 4–6 months of study	FAR/AA/TC	FM/BST/BP	–	CR/SBM/ACS	–
3:3 Professional & Decoupled Advanced	First 4–6 months of study	FAR/AA/TC	FM/BST/BP	–	CR/SBM	ACS
2:2:2 Professional & Intense Advanced	First 4–6 months of study	FAR/AA	TC/FM	BST/BP	CR/SBM/ACS	–
2:2:2 Professional & Decoupled Advanced	First 4–6 months of study	FAR/AA	TC/FM	BST/BP	CR/SBM	ACS

If your preferred pathway is not available at your chosen Kaplan training location we will be able to provide your preferred pathway via our [Live Online ACA course offering](#).

Our Resit Courses are designed to allow students to understand where their exam technique went wrong and show them how to improve it. To find out more about our Resit Courses please click [here](#).

Students studying Certificate Level must sit their exam in the same calendar year as their course of study. If the exam is sat in a different calendar year, updated study materials will be required.



Please contact us using the details below to make a course booking on the timetable dates  
 0161 259 7400 [studentservices@kaplan.co.uk](mailto:studentservices@kaplan.co.uk) [www.kaplan.co.uk/courses/aca-icaew](http://www.kaplan.co.uk/courses/aca-icaew)

# Kaplan Pathway Options

## **The introduction of Personalised days at Advanced Level**

In 2019 we introduced Personalised days to our Professional Level Knowledge courses and in 2020 our ACA course evolution will continue with the introduction of Personalised days at Advanced Level. For a reminder of the learning benefits of this course structure please click [here](#).

## **Which courses will adopt the new course structure?**

It is specifically Corporate Reporting and Strategic Business Management that will be changing. Our Advanced Case Study courses remain unchanged. **For a full analysis of all our course structures and durations, please see page 5 below**

## **Can Personalised sessions be scheduled at any time?**

They must be scheduled after all Knowledge classroom days have been completed (for the relevant subject) and before Application phase begins. We have shown Personalised days on the timetable so that they immediately follow classroom days but these can be rescheduled, in accordance with the above, to suit your internal needs if necessary.



Please contact us using the details below to make a course booking on the timetable dates  
**0161 259 7400** [studentservices@kaplan.co.uk](mailto:studentservices@kaplan.co.uk) [www.kaplan.co.uk/courses/aca-icaew](http://www.kaplan.co.uk/courses/aca-icaew)

# Kaplan's ACA Course Durations 2020

Certificate Days			
Subject	Live Online	Flex Online	Total
AC	7		7
AS	3		3
LAW		3	3
BTF		3	3
PTX	4		4
MI	4		4

Professional Days					
	Knowledge		Application	Exam Prep	Total
Subject	Live Online	Personalised	Live Online	Live Online	
FAR	3	2	3	4	12
AA	1	1	1	3	6
TC	2	2	4	3	11
FM	2	1	3	3	9
BST	1	1	2	3	7
BPT	2	3	2	4	11
BPB	2	3	2	4	11
BPI	2	3	2	4	11

Advanced Days					
	Knowledge		Application	Exam Prep	Total
Subject	Live Online	Personalised	Live Online	Live Online	
CR	2	2	3	4	11
SBM	1	1	2	3	7
ACS	3	0	2	5	10

First time students must study and attend the Knowledge, Application and Exam Preparation phases of the course. Individual phases of the course cannot be booked in isolation.

**Please note** that for evening and Live Online courses, one session equates to half a day.



Please contact us using the details below to make a course booking on the timetable dates  
**0161 259 7400** [studentservices@kaplan.co.uk](mailto:studentservices@kaplan.co.uk) [www.kaplan.co.uk/courses/aca-icaew](http://www.kaplan.co.uk/courses/aca-icaew)

# Kaplan's ACA Pass Rates v ICAEW's Average Rate

As the UK's largest ACA training provider we are very proud of the pass rates achieved by our first time students:

2019 Exam Results			
	Kaplan Pass Rate	ICAEW Pass Rate	Variance
<b>PROFESSIONAL</b>			
FAR	85.6%	80.2%	5.4%
AA	84.6%	80.6%	4.0%
TC	87.2%	82.4%	4.8%
FM	89.1%	85.5%	3.6%
BPT	84.4%	81.9%	2.5%
BST	96.1%	90.4%	5.7%
BPI	84.5%	80.0%	4.5%
BPB	87.1%	72.6%	14.5%
<b>ADVANCED</b>			
CR	89.7%	85.7%	4.0%
SBM	92.5%	88.4%	4.1%
ACS	82.8%	80.1%	2.7%

**Please note** that for some subjects, Kaplan's market share is such that there is little scope for variation from the ICAEW's pass rate e.g. for the BPI paper in 2017, 95% of students sitting the paper for the first time studied with Kaplan.



Please contact us using the details below to make a course booking on the timetable dates  
0161 259 7400 [studentservices@kaplan.co.uk](mailto:studentservices@kaplan.co.uk) [www.kaplan.co.uk/courses/aca-icaew](http://www.kaplan.co.uk/courses/aca-icaew)

## Certificate Level - Second Half 2020

Week commencing:	September					October					November									
	7th					14th					19th					16th				
	7	8	9	10	11	14	15	16	17	18	19	20	21	22	23	16	17	18	19	20
	M	T	W	T	F	M	T	W	T	F	M	T	W	T	F	M	T	W	T	F
Accounting (AC) - Option 1	K	K	K	K	K	K	K													
Assurance (AS) - Option 1								K	K	K										
Principles of Tax (PTX)											K	K	K	K						
Management Information (MI)																K	K	K	K	

**K** Knowledge (Live Online, formerly classroom)

Exams are sat on a computer at your local Kaplan centre. We recommend sitting 2 weeks after the course finishes. To book your exam please contact your local approved centre.

There are currently two study options. Live Online or Flexible Online Learning.

**Note:** All former classroom course dates in 2020 will be run remotely using Live Online.





## Advanced Level - November 2020

Week commencing:	July					August					September					October						November																							
	27th					3rd					24th					7th					12th			19th			26th			2nd															
	27	28	29	30	31	3	4	5	6	7	24	25	26	27	28	7	8	9	10	11	12	13	14	15	16	19	20	21	22	23	26	27	28	29	30	2	3	4	5	6					
<b>Available Study Combinations</b>	M	T	W	T	F	M	T	W	T	F	M	T	W	T	F	M	T	W	T	F	M	T	W	T	F	M	T	W	T	F	M	T	W	T	F	M	T	W	T	F	M	T	W	T	F
CR/SBM/ACS - Option 1	K	K	K	K	K	K	K	K	K							A	A	A	A	A						EP	EP	EP	EP	EP	EP	EP	EP	EP	EP	E	E	E							
CR/SBM - Option 1	K	K	K	K	K	K										A	A	A								EP	EP				EP	EP				E	E								
ACS - Option 1				K	K	K													A	A						EP	EP						EP	EP	EP				E						

## Advanced Level Live Online Intensive - November 2020

Week commencing:	September					October					November														
	14th					21st					28th					5th					2nd				
	14	15	16	17	18	21	22	23	24	25	28	29	30	1	2	5	6	7	8	9	2	3	4	5	6
<b>Available Study Combinations</b>	M	T	W	T	F	M	T	W	T	F	M	T	W	T	F	M	T	W	T	F	M	T	W	T	F
CR/SBM - Option 1						K	K	K	K	K						A	A	A	A	A	E	E			
CR/SBM - Option 2	K	K	K	K	K	K	A	A	A	A	A										E	E			

- |  |  |                                    |
|--|--|------------------------------------|
| <b>K</b> Knowledge (Live Online, formerly classroom)   | <b>EP</b> Exam Preparation (Live Online, formerly classroom) | <b>K</b> Knowledge (Live Online)   |
| <b>K</b> Personalised (OnDemand)                       | <b>E</b> Real Exam   | <b>A</b> Application (Live Online) |
| <b>A</b> Application (Live Online, formerly classroom) |  |                                    |

Knowledge must be completed prior to attending the Application dates for that subject.

Currently the only study option is Live Online.

**Note:** All former classroom course dates in 2020 will be run remotely using Live Online.